

The Idea of Domes

Michael Hicks

Performance Notes

This is a work for solo grand piano tuned in Werckmeister III temperament. *Performance on an equal-tempered piano will fail to bring out many of the harmonic relationships and varied colors intended by the composer.*

The bottom two of the three staves used represent the traditional grand staff of the instrument. The top staff is for notes to be sung (straight tone—no vibrato) by the player. Those notes are written at actual pitch and should not be transposed down (a male player would likely sing falsetto). Sung notes with no underlying text take the syllable “ah.” All others use Italian solfeggio syllables.


The duration of each fermata is 4”–5”, except where noted.

An accidental applies only to the note it immediately precedes, except for immediately repeated notes or notes repeated in a beamed-together figure (e.g. the beamed arpeggiations on p. 2, first system, as well as all beamed grace-note ornamentations).


Every notation of “8ve” or “pizz.” (i.e. plucking the string of the notated pitch) applies only to the note to which it is attached, except where a bracket is used to denote two applicable notes. (For “pizz.” the player must work out which hand to use, based on how he or she plays surrounding notes.)


An “ord.” designation is sometimes given to remind the player to play notes in the normal way on the keys.

Miscellaneous notational symbols:

 =put sustain pedal down

 =release sustain pedal

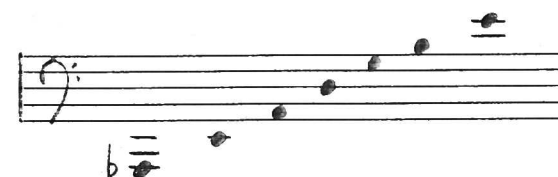
 =briefly release then reapply sustain pedal

 =while playing the note on the keys mute the string with the index finger near the

peg (the player must work out which hand to use for muting, based on how he plays surrounding notes)

Preparation:

At a minimum the player should mark these strings:



This may be done by carefully applying tiny pieces of tape to the tops of the pertinent dampers

The Idea of Domes

Michael Hicks

voice $\text{♩} = \text{ca. } 84$

piano* $\text{ca. } 6''$

ped.

* in Werckmeister III tuning

faster $\text{♩} = \text{ca. } 64$ faster $\text{♩} = \text{ca. } 72$ poco accel. a tempo rit. first tempo $\text{♩} = \text{ca. } 84$

So me fa $\text{ca. } 2''$

pizz. PP

(ord)

pizz. pizz. pizz. pizz. pizz.

faster $\text{♩} = \text{ca. } 80$

(omit 1P x only)

(Keep playing & singing, steady & even)

rubato

mp f

mp f PP

ff

arisc.

Sing staccato, alternating ad lib the syllables "fa," "mi," "so," "la," & "re"
 play muted except when treble figures are played

Meno mosso $\text{♩} = ca. 72$

accel. molto

$\text{♩} = ca. 50$
very slow, rubato, espressivo, legato

first tempo ($\text{♩} = ca. 84$)

Handwritten musical score for the first system. It consists of two staves: piano (top) and violin (bottom). The piano staff has a treble clef and a key signature of one sharp (F#). The violin staff has a treble clef and a key signature of one sharp. The score includes various musical notations such as notes, rests, and slurs. Annotations include "me" above the piano staff, "8vc" above the violin staff, and "PPP" below the piano staff. There are also handwritten markings like "ca. 15''", "ca. 2''", and "ca. 2''". A dynamic marking "P" is present at the end of the system.

$\text{♩} = ca. 50$ (as before) $\text{♩} = ca. 72$ rubato

molto accel.

$\text{♩} = ca. 132$ (continuous, no break between runs)

Handwritten musical score for the second system. It consists of two staves: piano (top) and violin (bottom). The piano staff has a treble clef and a key signature of one sharp. The violin staff has a treble clef and a key signature of one sharp. The score includes various musical notations such as notes, rests, and slurs. Annotations include "pizz." above the piano staff, "ppp" below the piano staff, "ff" below the piano staff, and "f" below the piano staff. There are also handwritten markings like "3''" and "25, 30, 25 possible". A dynamic marking "P" is present at the end of the system.

($\text{♩} = ca. 40$)

Handwritten musical score for the third system. It consists of two staves: piano (top) and violin (bottom). The piano staff has a treble clef and a key signature of one sharp. The violin staff has a treble clef and a key signature of one sharp. The score includes various musical notations such as notes, rests, and slurs. Annotations include "pizz." above the piano staff. There are also handwritten markings like "3''" and "3''".

♩ = ca. 40 ♩ = ca. 72

(play/sing ostinato *dim.* ca. 6" past this attack, then let ring ca. 6" note)

Slower ♩ = ca. 60, rubato

ca. 12" ca. 8"

mp *p* *mf* *p* *mf* *poco* *f* *poco* *mf* *p*

(play/sing syllables & other directions as before)

(ped. is down through end of piece)

♩ = ca. 55 play 4 X

mf *pp*

L.V. 2+ least 25"

(provo, utah - September 2003)